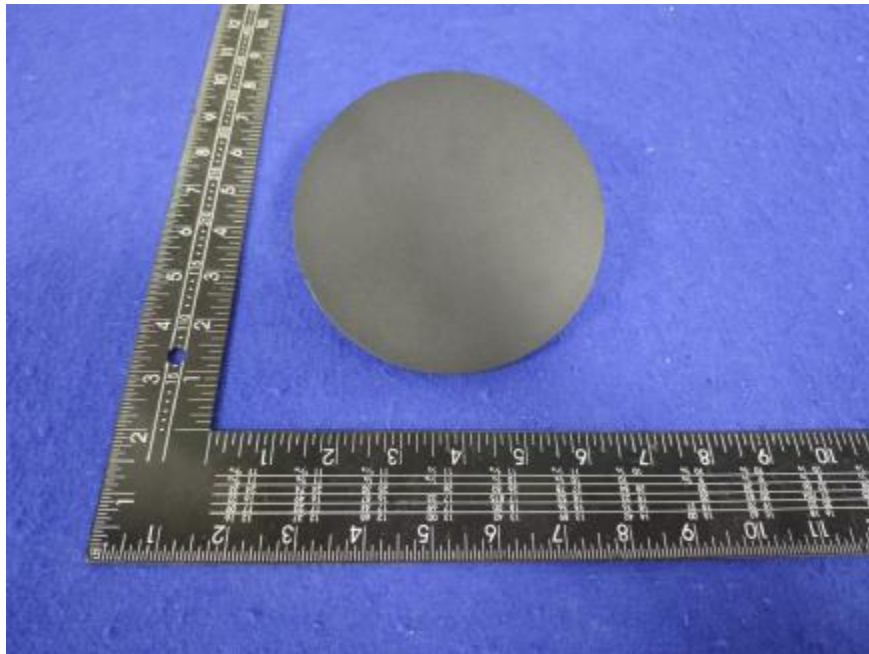


Luminaire Photograph



Light Output Ratio:	12.5%	
Luminaire Power:	5.664 W	
SHR Nominal:	2.00	Calculated using the TM5
SHR Maximum:	2.00	fine grid method.

C Range: 0 - 360DEG
C Interval: 30.0DEG
Test Speed: HIGH
Temperature: 25.3 °C
Operators: zoe
Test Date: 2025-1-8

γ Range: 0 - 180DEG
γ Interval: 1.0DEG
Test System: EVERFINE GO-SPEX500_V1 SYSTEM V2.00.461
Humidity: 65.0%
Test Distance: 3.160m [K=1.0000]
Remarks: LAMP: HL-A-2835D90W-2-S1-08L-HR5 Ra:90
PC: PS-1164-006-077 120R
NOT DRIVER: 48V
30minutes warm-up

LUMINOUS INTENSITY DISTRIBUTION DIAGRAM

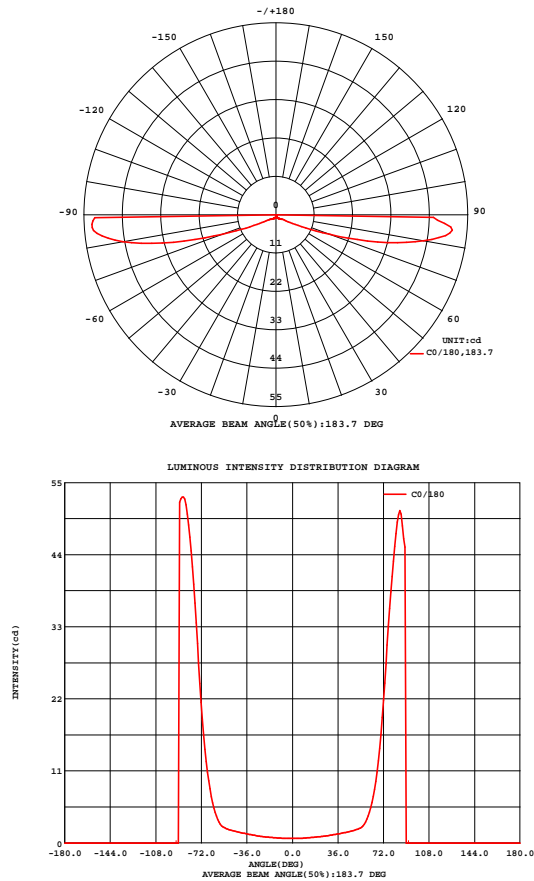


Fig. C0/C180

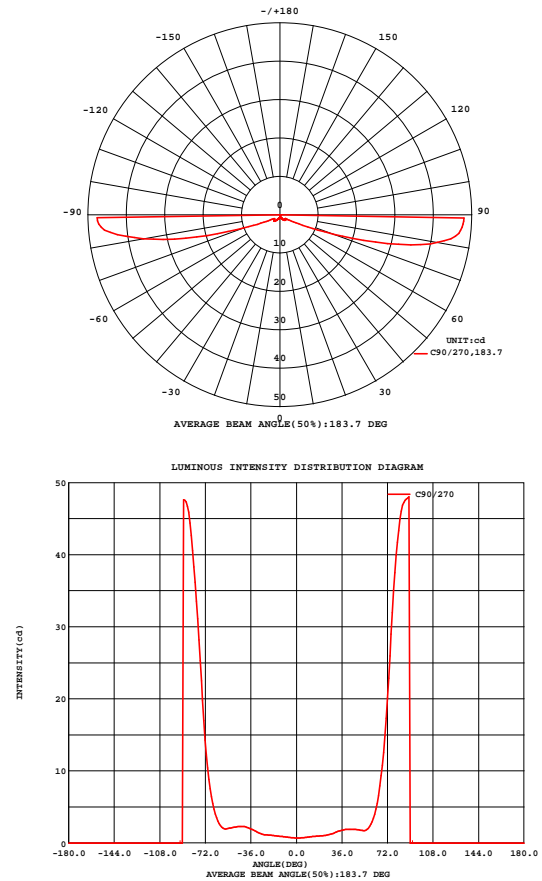


Fig. C90/C270

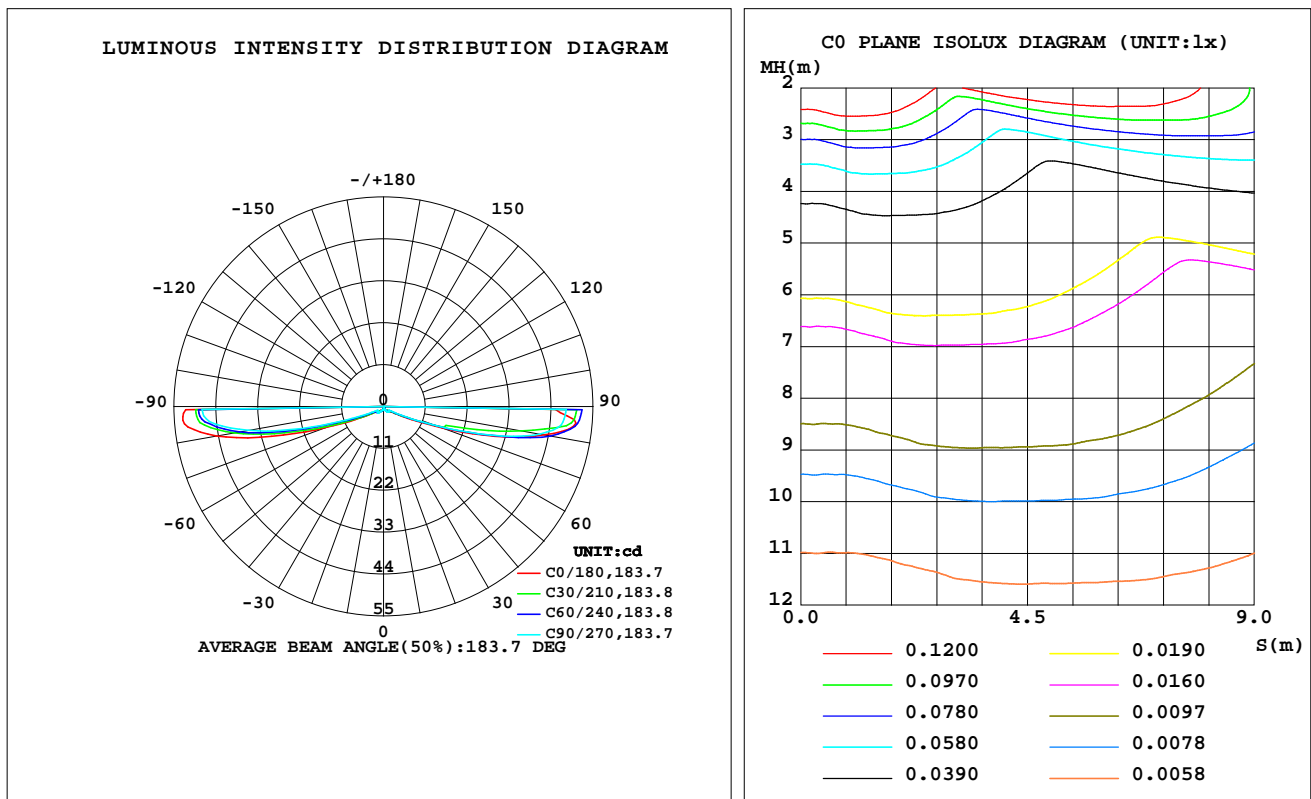
C Range: 0 - 360DEG
C Interval: 30.0DEG
Test Speed: HIGH
Temperature:25.3℃
Operators:zoe
Test Date:2025-1-8

γ Range: 0 - 180DEG
γ Interval: 1.0DEG
Test System:EVERFINE GO-SPEX500_V1 SYSTEM V2.00.461
Humidity:65.0%
Test Distance:3.160m [K=1.0000]
Remarks: LAMP:HL-A-2835D90W-2-S1-08L-HR5 Ra:90
PC:PS-1164-006-077 120R
NOT DRIVER:48V
30minutes warm-up

LUMINAIRE PHOTOMETRIC TEST REPORT

Test:U:47.997V I:0.1180A P:5.6637W PF:1.0000 Freq:0Hz Lamp Flux:741.58x1 lm		
NAME: OZ48-O	TYPE:	WEIGHT:
SPEC.: 3000K	DIM.:	SERIAL No.: 2501080047
MFR.: RISE	SUR.: 0.00753914m2	Shielding Angle:

DATA OF LAMP		PHOTOMETRIC DATA Eff: 16.30 lm/W			
MODEL	HONGLI	I _{max} (cd)	52.79	S/MH(C0/180)	9.03
NOMINAL POWER(W)	5	LOR(%)	12.5	S/MH(C90/270)	2.93
RATED VOLTAGE(V)	48	TOTAL FLUX(lm)	92.343	η UP,DN(C0-180)	0.0,6.4
NOMINAL FLUX(lm)	741.58	CIE CLASS	DIRECT	η UP,DN(C180-360)	0.0,6.0
LAMPS INSIDE	1	η up(%)	0.0	CIBSE SHR NOM	2.00
TEST VOLTAGE(V)	48	η down(%)	12.5	CIBSE SHR MAX	2.00



C Range: 0 - 360DEG
C Interval: 30.0DEG
Test Speed: HIGH
Temperature:25.3℃
Operators:zoe
Test Date:2025-1-8

γ Range: 0 - 180DEG
γ Interval: 1.0DEG
Test System:EVERFINE GO-SPEX500_V1 SYSTEM V2.00.461
Humidity:65.0%
Test Distance:3.160m [K=1.0000]
Remarks: LAMP:HL-A-2835D90W-2-S1-08L-HR5 Ra:90
PC:PS-1164-006-077 120R
NOT DRIVER:48V
30minutes warm-up

ZONAL FLUX DIAGRAM

ZONAL FLUX DIAGRAM:

γ	C0	C45	C90	C135	C180	C225	C270	C315	γ	Φ zone	Φ total	%lum,lamp
10	0.7567	0.7878	0.8379	0.7957	0.7517	0.8257	0.8708	0.8019	0- 10	0.0717	0.0717	0.08,0.01
20	0.9327	0.9523	1.009	0.9545	0.9058	1.005	1.074	0.9793	10- 20	0.2543	0.3260	0.35,0.04
30	1.178	1.251	1.390	1.291	1.178	1.367	1.437	1.290	20- 30	0.5171	0.8431	0.91,0.11
40	1.530	1.680	1.883	1.709	1.551	1.881	2.241	1.846	30- 40	0.9787	1.822	1.97,0.25
50	2.004	1.999	1.800	2.040	2.051	2.338	2.152	2.350	40- 50	1.516	3.337	3.61,0.45
60	4.119	3.594	2.974	4.186	4.107	3.585	2.419	3.619	50- 60	2.273	5.611	6.08,0.76
70	16.53	15.16	14.91	18.16	16.43	13.03	10.41	13.39	60- 70	7.844	13.46	14.6,1.81
80	42.99	40.68	41.70	45.72	44.55	39.22	36.15	39.49	70- 80	29.53	42.99	46.6,5.8
90	0	0	0	0	0	0	0	0	80- 90	49.35	92.34	100,12.5
100	0	0	0	0	0	0	0	0	90-100	0	92.34	100,12.5
110	0	0	0	0	0	0	0	0	100-110	0	92.34	100,12.5
120	0	0	0	0	0	0	0	0	110-120	0	92.34	100,12.5
130	0	0	0	0	0	0	0	0	120-130	0	92.34	100,12.5
140	0	0	0	0	0	0	0	0	130-140	0	92.34	100,12.5
150	0	0	0	0	0	0	0	0	140-150	0	92.34	100,12.5
160	0	0	0	0	0	0	0	0	150-160	0	92.34	100,12.5
170	0	0	0	0	0	0	0	0	160-170	0	92.34	100,12.5
180	0	0	0	0	0	0	0	0	170-180	0	92.34	100,12.5
DEG	LUMINOUS INTENSITY:cd									UNIT:lm		

C Range: 0 - 360DEG
C Interval: 30.0DEG
Test Speed: HIGH
Temperature:25.3℃
Operators:zoe
Test Date:2025-1-8

γ Range: 0 - 180DEG
 γ Interval: 1.0DEG
Test System:EVERFINE GO-SPEX500_V1 SYSTEM V2.00.461
Humidity:65.0%
Test Distance:3.160m [K=1.0000]
Remarks: LAMP:HL-A-2835D90W-2-S1-08L-HR5 Ra:90
PC:PS-1164-006-077 120R
NOT DRIVER:48V
30minutes warm-up

LUMINANCE LIMITATION CURVES

Test:U:47.997V I:0.1180A P:5.6637W PF:1.0000 Freq:0Hz
Lamp Flux:741.58x1 lm

NAME: OZ48-O

TYPE:

WEIGHT:

SPEC.: 3000K

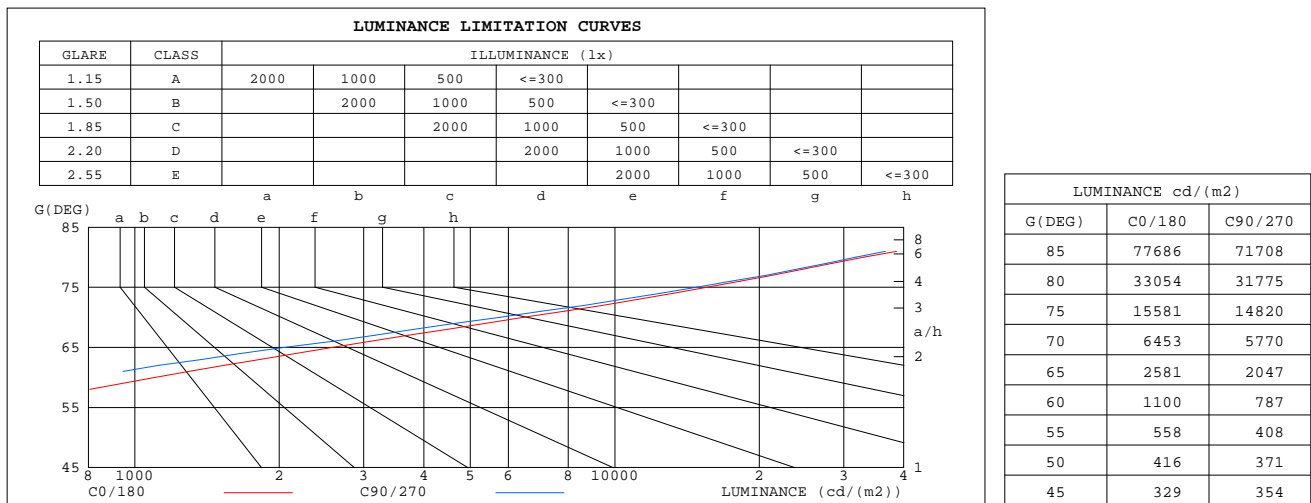
DIM.:

SERIAL No.: 2501080047

MFR.: RISE

SUR.: 0.00753914m2

Shielding Angle:



C Range: 0 - 360DEG
C Interval: 30.0DEG
Test Speed: HIGH
Temperature:25.3℃
Operators:zoe
Test Date:2025-1-8

γ Range: 0 - 180DEG
γ Interval: 1.0DEG
Test System:EVERFINE GO-SPEX500_V1 SYSTEM V2.00.461
Humidity:65.0%
Test Distance:3.160m [K=1.0000]
Remarks: LAMP:HL-A-2835D90W-2-S1-08L-HR5 Ra:90
PC:PS-1164-006-077 120R
NOT DRIVER:48V
30minutes warm-up

CU AND LUMINAIRE BUDGETARY ESTIMATE DIAGRAM

Test:U:47.997V I:0.1180A P:5.6637W PF:1.0000 Freq:0Hz Lamp Flux:741.58x1 lm		
NAME: OZ48-O	TYPE:	WEIGHT:
SPEC.: 3000K	DIM.:	SERIAL No.: 2501080047
MFR.: RISE	SUR.: 0.00753914m2	Shielding Angle:

pcc	80%			70%			50%			30%			10%			0
pw	50%	30%	10%	50%	30%	10%	50%	30%	10%	50%	30%	10%	50%	30%	10%	0
pfc	20%			20%			20%			20%			20%			0
RCR	RCR:Room Cavity Ratio			Coefficients of Utilization(CU)												
0.0	.15	.15	.15	.14	.14	.14	.14	.14	.14	.13	.13	.13	.13	.13	.13	.12
1.0	.09	.07	.06	.08	.07	.05	.08	.06	.05	.07	.06	.05	.07	.06	.05	.04
2.0	.07	.05	.03	.06	.04	.03	.06	.04	.03	.05	.04	.03	.05	.04	.03	.02
3.0	.05	.03	.02	.05	.03	.02	.05	.03	.02	.04	.03	.02	.04	.03	.02	.01
4.0	.05	.03	.01	.04	.03	.01	.04	.02	.01	.04	.02	.01	.03	.02	.01	.01
5.0	.04	.02	.01	.04	.02	.01	.03	.02	.01	.03	.02	.01	.03	.02	.01	.00
6.0	.04	.02	.01	.03	.02	.01	.03	.02	.01	.03	.02	.01	.03	.02	.01	.00
7.0	.03	.02	.01	.03	.02	.01	.03	.02	.01	.03	.01	.01	.02	.01	.01	.00
8.0	.03	.02	.01	.03	.01	.01	.03	.01	.01	.02	.01	.01	.02	.01	.01	.00
9.0	.03	.01	.01	.03	.01	.01	.02	.01	.00	.02	.01	.00	.02	.01	.00	.00
10.0	.02	.01	.00	.02	.01	.00	.02	.01	.00	.02	.01	.00	.02	.01	.00	.00

LAMPS		LUMINAIRE BUDGETARY DIAGRAM															
50	CONDITIONS																
40	FLUX	5000lm															
30	FACTOR	0.70															
	Hdown	0.00m															
	Hwork	0.00m															
20	Ework(AVE)	100lx															
	p(%)	cc	w	fc													
		70	50	30													
		50	30	20													
10																	
9																	
8																	
7																	
6																	
5																	
4																	
3																	
2																	
	10	20	30	40	50	70	100	200	300	500	700	1k	2k	3k	4k	5k	7k
	AREA (m2)																

C Range: 0 - 360DEG
C Interval: 30.0DEG
Test Speed: HIGH
Temperature:25.3℃
Operators:zoe
Test Date:2025-1-8

γ Range: 0 - 180DEG
γ Interval: 1.0DEG
Test System:EVERFINE GO-SPEX500_V1 SYSTEM V2.00.461
Humidity:65.0%
Test Distance:3.160m [K=1.0000]
Remarks: LAMP:HL-A-2835D90W-2-S1-08L-HR5 Ra:90
PC:PS-1164-006-077 120R
NOT DRIVER:48V
30minutes warm-up

WEC AND CCEC

Test:U:47.997V I:0.1180A P:5.6637W PF:1.0000 Freq:0Hz Lamp Flux:741.58x1 lm		
NAME: OZ48-O	TYPE:	WEIGHT:
SPEC.: 3000K	DIM.:	SERIAL No.: 2501080047
MFR.: RISE	SUR.: 0.00753914m2	Shielding Angle:

pcc	80%			70%			50%			30%			10%			0
pw	50%	30%	10%	50%	30%	10%	50%	30%	10%	50%	30%	10%	50%	30%	10%	0
pfc	20%			20%			20%			20%			20%			0
RCR	RCR:Room Cavity Ratio						Wall Exitance Coefficients(WEC)									
0.0																
1.0	.119	.068	.021	.118	.067	.021	.116	.067	.021	.114	.066	.021	.112	.065	.021	
2.0	.082	.045	.014	.081	.044	.014	.079	.044	.014	.077	.043	.014	.076	.043	.013	
3.0	.063	.034	.010	.062	.033	.010	.061	.033	.010	.059	.032	.010	.058	.032	.010	
4.0	.051	.027	.008	.051	.027	.008	.049	.026	.008	.048	.026	.008	.047	.025	.008	
5.0	.044	.022	.006	.043	.022	.006	.042	.022	.006	.040	.021	.006	.039	.021	.006	
6.0	.038	.019	.005	.037	.019	.005	.036	.019	.005	.035	.018	.005	.034	.018	.005	
7.0	.034	.017	.005	.033	.016	.005	.032	.016	.005	.031	.016	.005	.030	.016	.005	
8.0	.030	.015	.004	.030	.015	.004	.029	.014	.004	.028	.014	.004	.027	.014	.004	
9.0	.027	.013	.004	.027	.013	.004	.026	.013	.004	.026	.013	.004	.025	.013	.004	
10.0	.025	.012	.003	.025	.012	.003	.024	.012	.003	.023	.012	.003	.023	.011	.003	

pcc	80%			70%			50%			30%			10%			0	
pw	50%	30%	10%	50%	30%	10%	50%	30%	10%	50%	30%	10%	50%	30%	10%	0	
pfc	20%			20%			20%			20%			20%			0	
RCR	RCR:Room Cavity Ratio						Ceiling Cavity Exitance Coefficients(CCEC)										
0.0	.024	.024	.024	.020	.020	.020	.014	.014	.014	.008	.008	.008	.003	.003	.003		
1.0	.028	.019	.010	.024	.016	.009	.016	.011	.006	.009	.006	.004	.003	.002	.001		
2.0	.028	.016	.007	.024	.014	.006	.016	.010	.004	.009	.006	.002	.003	.002	.001		
3.0	.026	.014	.005	.022	.012	.004	.015	.009	.003	.009	.005	.002	.003	.002	.001		
4.0	.025	.013	.004	.021	.011	.004	.014	.008	.003	.008	.005	.002	.003	.001	.001		
5.0	.023	.012	.004	.020	.010	.003	.014	.007	.002	.008	.004	.001	.003	.001	.000		
6.0	.022	.011	.003	.019	.009	.003	.013	.007	.002	.007	.004	.001	.002	.001	.000		
7.0	.020	.010	.003	.017	.009	.003	.012	.006	.002	.007	.004	.001	.002	.001	.000		
8.0	.019	.009	.003	.016	.008	.002	.011	.006	.002	.007	.003	.001	.002	.001	.000		
9.0	.018	.009	.002	.015	.008	.002	.011	.005	.002	.006	.003	.001	.002	.001	.000		
10.0	.017	.008	.002	.014	.007	.002	.010	.005	.001	.006	.003	.001	.002	.001	.000		

C Range: 0 - 360DEG
C Interval: 30.0DEG
Test Speed: HIGH
Temperature:25.3℃
Operators:zoe
Test Date:2025-1-8

γ Range: 0 - 180DEG
γ Interval: 1.0DEG
Test System:EVERFINE GO-SPEX500_V1 SYSTEM V2.00.461
Humidity:65.0%
Test Distance:3.160m [K=1.0000]
Remarks: LAMP:HL-A-2835D90W-2-S1-08L-HR5 Ra:90
PC:PS-1164-006-077 120R
NOT DRIVER:48V
30minutes warm-up

UGR(Unified Glare Rating) Table

Test:U:47.997V I:0.1180A P:5.6637W PF:1.0000 Freq:0Hz Lamp Flux:741.58x1 lm										
NAME: OZ48-O					TYPE:			WEIGHT:		
SPEC.: 3000K					DIM.:			SERIAL No.: 2501080047		
MFR.: RISE					SUR.: 0.00753914m2			Shielding Angle:		
ceiling/cavity	0.7	0.7	0.5	0.5	0.3	0.7	0.7	0.5	0.5	0.3
walls	0.5	0.3	0.5	0.3	0.3	0.5	0.3	0.5	0.3	0.3
working plane	0.2	0.2	0.2	0.2	0.2	0.2	0.2	0.2	0.2	0.2
Room dimensions	Viewed crosswise					Viewed endwise				
x = 2H y = 2H	9.1	11.4	9.4	11.7	11.9	7.9	10.3	8.3	10.5	10.8
3H	19.6	21.9	20.0	22.2	22.5	19.1	21.3	19.4	21.6	21.9
4H	25.0	27.2	25.3	27.5	27.8	25.0	27.2	25.3	27.5	27.8
6H	30.1	32.2	30.4	32.5	32.9	30.1	32.3	30.5	32.6	32.9
8H	32.4	34.5	32.8	34.9	35.2	32.3	34.4	32.7	34.8	35.1
12H	34.7	36.8	35.1	37.2	37.5	34.4	36.5	34.8	36.9	37.2
4H 2H	12.4	14.6	12.8	14.9	15.2	12.0	14.2	12.4	14.5	14.9
3H	21.3	23.4	21.7	23.8	24.1	21.4	23.5	21.8	23.9	24.2
4H	26.4	28.4	26.8	28.8	29.2	26.9	28.9	27.4	29.3	29.7
6H	31.6	33.5	32.0	33.9	34.3	31.9	33.8	32.4	34.2	34.7
8H	34.0	35.9	34.5	36.3	36.7	34.1	36.0	34.6	36.4	36.8
12H	36.4	38.2	36.9	38.6	39.1	36.3	38.1	36.7	38.5	38.9
8H 4H	28.1	29.9	28.6	30.4	30.8	28.5	30.4	29.0	30.8	31.2
6H	33.0	34.7	33.4	35.1	35.6	33.4	35.2	33.9	35.6	36.1
8H	35.5	37.1	36.0	37.6	38.1	35.8	37.4	36.3	37.8	38.3
12H	38.1	39.6	38.6	40.1	40.6	38.1	39.6	38.6	40.0	40.5
12H 4H	29.0	30.8	29.4	31.2	31.6	29.1	30.9	29.6	31.4	31.8
6H	33.6	35.3	34.1	35.7	36.2	34.0	35.6	34.5	36.1	36.6
8H	36.2	37.7	36.7	38.2	38.7	36.4	37.9	36.9	38.4	38.9
Variations with the observer position at spacings(CIE Pub.117):										
S = 1.0H	+ 0.1 / - 0.1					+ 0.1 / - 0.1				
1.5H	+ 0.3 / - 0.3					+ 0.3 / - 0.3				
2.0H	+ 0.4 / - 0.4					+ 0.4 / - 0.4				

CIE Pub.117, 741.6 lm Total Lamp Luminous Flux Correct (8log(F/F0) = -1.0)
Area: 0.00753914 m2

C Range: 0 - 360DEG
C Interval: 30.0DEG
Test Speed: HIGH
Temperature:25.3℃
Operators:zoe
Test Date:2025-1-8

γ Range: 0 - 180DEG
γ Interval: 1.0DEG
Test System:EVERFINE GO-SPEX500_V1 SYSTEM V2.00.461
Humidity:65.0%
Test Distance:3.160m [K=1.0000]
Remarks: LAMP:HL-A-2835D90W-2-S1-08L-HR5 Ra:90
PC:PS-1164-006-077 120R
NOT DRIVER:48V
30minutes warm-up

UTILIZATION FACTORS TABLE

Test:U:47.997V I:0.1180A P:5.6637W PF:1.0000 Freq:0Hz Lamp Flux:741.58x1 lm		
NAME: OZ48-O	TYPE:	WEIGHT:
SPEC.: 3000K	DIM.:	SERIAL No.: 2501080047
MFR.: RISE	SUR.: 0.00753914m2	Shielding Angle:

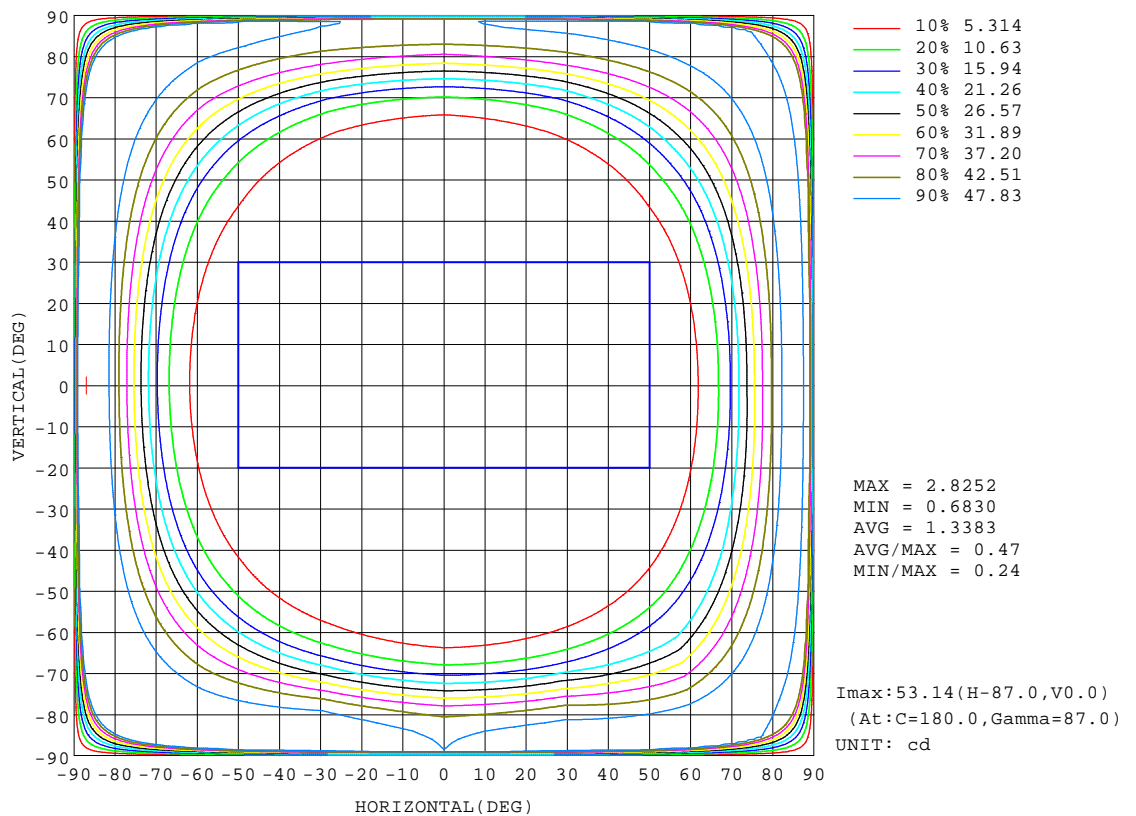
REFLECTANCE										
Ceiling	0.8	0.8	0.8	0.7	0.7	0.7	0.5	0.5	0.5	0
Walls	0.7	0.5	0.3	0.7	0.5	0.3	0.7	0.5	0.3	0
Working plane	0.2	0.2	0.2	0.2	0.2	0.2	0.2	0.2	0.2	0
ROOM INDEX	UTILIZATION FACTORS(PERCENT) $k(RI) \times RCR = 5$									
k = 0.60	4	3	1	4	3	1	4	2	1	0
0.80	5	3	2	5	3	2	5	3	2	0
1.00	6	3	2	6	3	2	5	4	2	0
1.25	6	4	2	6	4	2	6	4	2	1
1.50	7	4	3	7	4	3	6	4	3	1
2.00	8	5	4	7	5	3	7	5	3	1
2.50	8	6	4	8	6	4	7	5	4	2
3.00	9	7	5	9	6	5	8	6	5	3
4.00	10	8	6	9	7	6	8	7	6	4
5.00	10	8	7	10	8	7	9	8	6	4
ROOM INDEX	UF(total)									Direct
According to DIN EN 13032-2 2004			Suspended					SHRNOM = 1.25		

C Range: 0 - 360DEG
C Interval: 30.0DEG
Test Speed: HIGH
Temperature:25.3℃
Operators:zoe
Test Date:2025-1-8

γ Range: 0 - 180DEG
γ Interval: 1.0DEG
Test System:EVERFINE GO-SPEX500_V1 SYSTEM V2.00.461
Humidity:65.0%
Test Distance:3.160m [K=1.0000]
Remarks: LAMP:HL-A-2835D90W-2-S1-08L-HR5 Ra:90
PC:PS-1164-006-077 120R
NOT DRIVER:48V
30minutes warm-up

ISOCANDELA DIAGRAM

Test:U:47.997V I:0.1180A P:5.6637W PF:1.0000 Freq:0Hz Lamp Flux:741.58x1 lm		
NAME: OZ48-O	TYPE:	WEIGHT:
SPEC.: 3000K	DIM.:	SERIAL No.: 2501080047
MFR.: RISE	SUR.: 0.00753914m2	Shielding Angle:

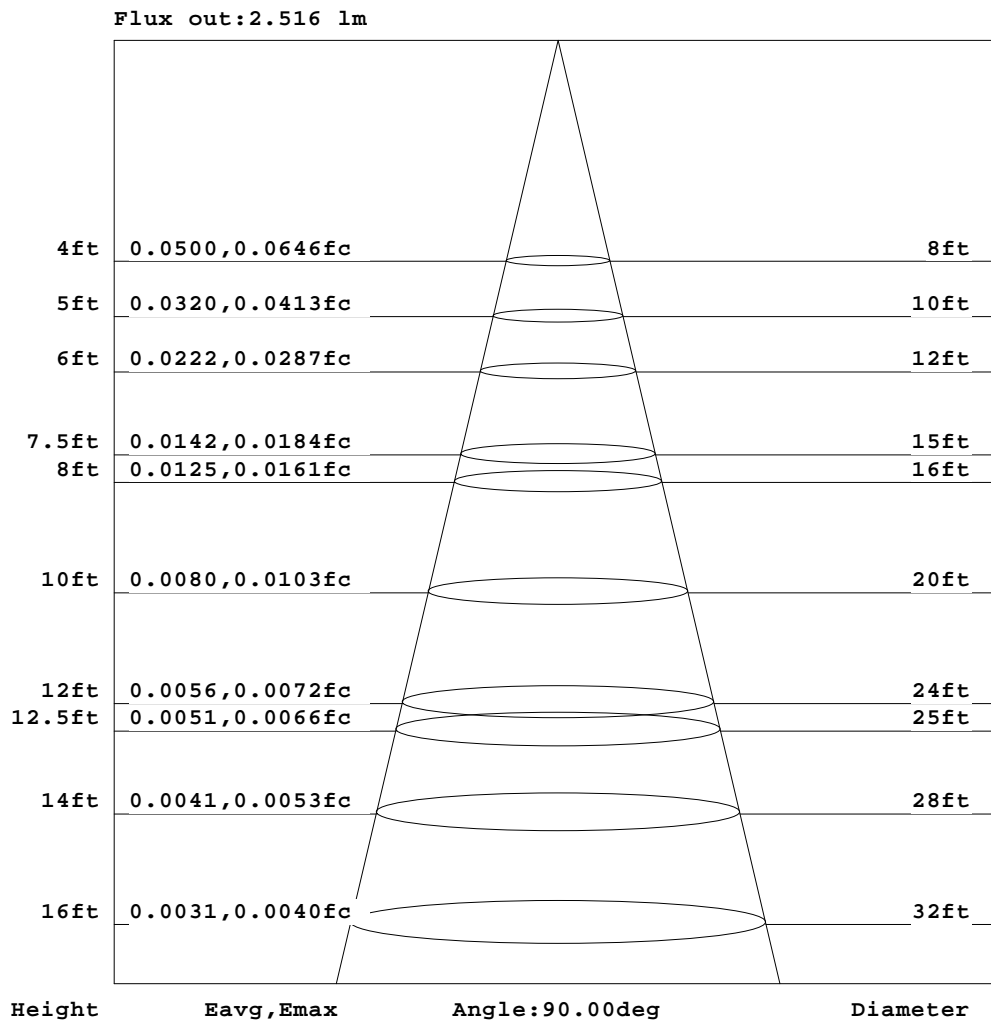


C Range: 0 - 360DEG
 C Interval: 30.0DEG
 Test Speed: HIGH
 Temperature:25.3℃
 Operators:zoe
 Test Date:2025-1-8

γ Range: 0 - 180DEG
 γ Interval: 1.0DEG
 Test System:EVERFINE GO-SPEX500_V1 SYSTEM V2.00.461
 Humidity:65.0%
 Test Distance:3.160m [K=1.0000]
 Remarks: LAMP:HL-A-2835D90W-2-S1-08L-HR5 Ra:90
 PC:PS-1164-006-077 120R
 NOT DRIVER:48V
 30minutes warm-up

AAI Figure

Test:U:47.997V I:0.1180A P:5.6637W PF:1.0000 Freq:0Hz Lamp Flux:741.58x1 lm		
NAME: OZ48-O	TYPE:	WEIGHT:
SPEC.: 3000K	DIM.:	SERIAL No.: 2501080047
MFR.: RISE	SUR.: 0.00753914m2	Shielding Angle:



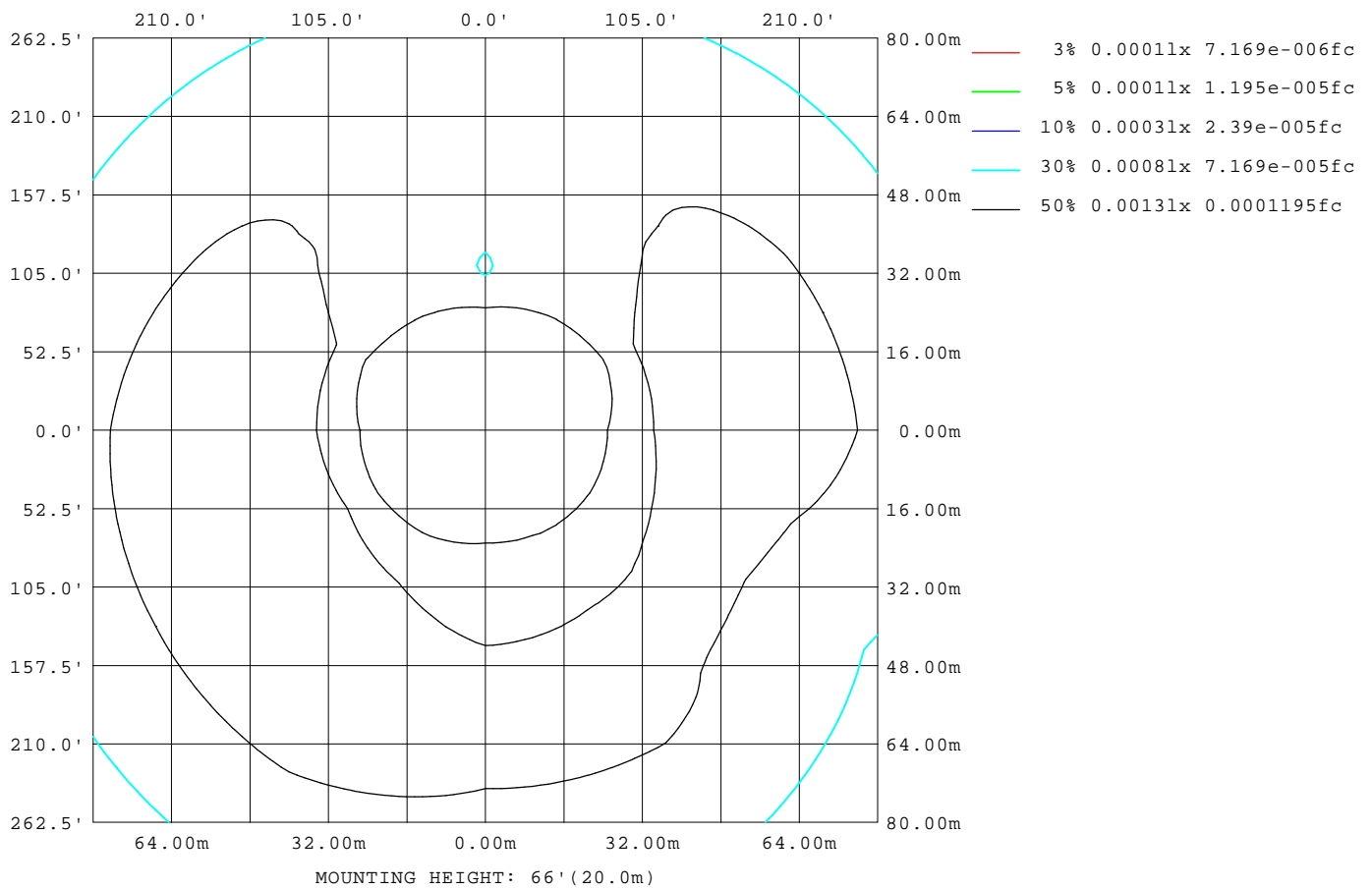
Note: The Curves indicate the illuminated area and the average illumination when the luminaire is at different distance.

C Range: 0 - 360DEG
C Interval: 30.0DEG
Test Speed: HIGH
Temperature: 25.3 °C
Operators: zoe
Test Date: 2025-1-8

γ Range: 0 - 180DEG
γ Interval: 1.0DEG
Test System: EVERFINE GO-SPEX500_V1 SYSTEM V2.00.461
Humidity: 65.0%
Test Distance: 3.160m [K=1.0000]
Remarks: LAMP: HL-A-2835D90W-2-S1-08L-HR5 Ra: 90
PC: PS-1164-006-077 120R
NOT DRIVER: 48V
30minutes warm-up

ISOLUX DIAGRAM

Test:U:47.997V I:0.1180A P:5.6637W PF:1.0000 Freq:0Hz Lamp Flux:741.58x1 lm		
NAME: OZ48-O	TYPE:	WEIGHT:
SPEC.: 3000K	DIM.:	SERIAL No.: 2501080047
MFR.: RISE	SUR.: 0.00753914m2	Shielding Angle:



C Range: 0 - 360DEG
C Interval: 30.0DEG
Test Speed: HIGH
Temperature:25.3℃
Operators:zoe
Test Date:2025-1-8

γ Range: 0 - 180DEG
γ Interval: 1.0DEG
Test System:EVERFINE GO-SPEX500_V1 SYSTEM V2.00.461
Humidity:65.0%
Test Distance:3.160m [K=1.0000]
Remarks: LAMP:HL-A-2835D90W-2-S1-08L-HR5 Ra:90
PC:PS-1164-006-077 120R
NOT DRIVER:48V
30minutes warm-up

LED Avg.L Report

Test:U:47.997V I:0.1180A P:5.6637W PF:1.0000 Freq:0Hz Lamp Flux:741.58x1 lm		
NAME: OZ48-O	TYPE:	WEIGHT:
SPEC.: 3000K	DIM.:	SERIAL No.: 2501080047
MFR.: RISE	SUR.: 0.00753914m2	Shielding Angle:

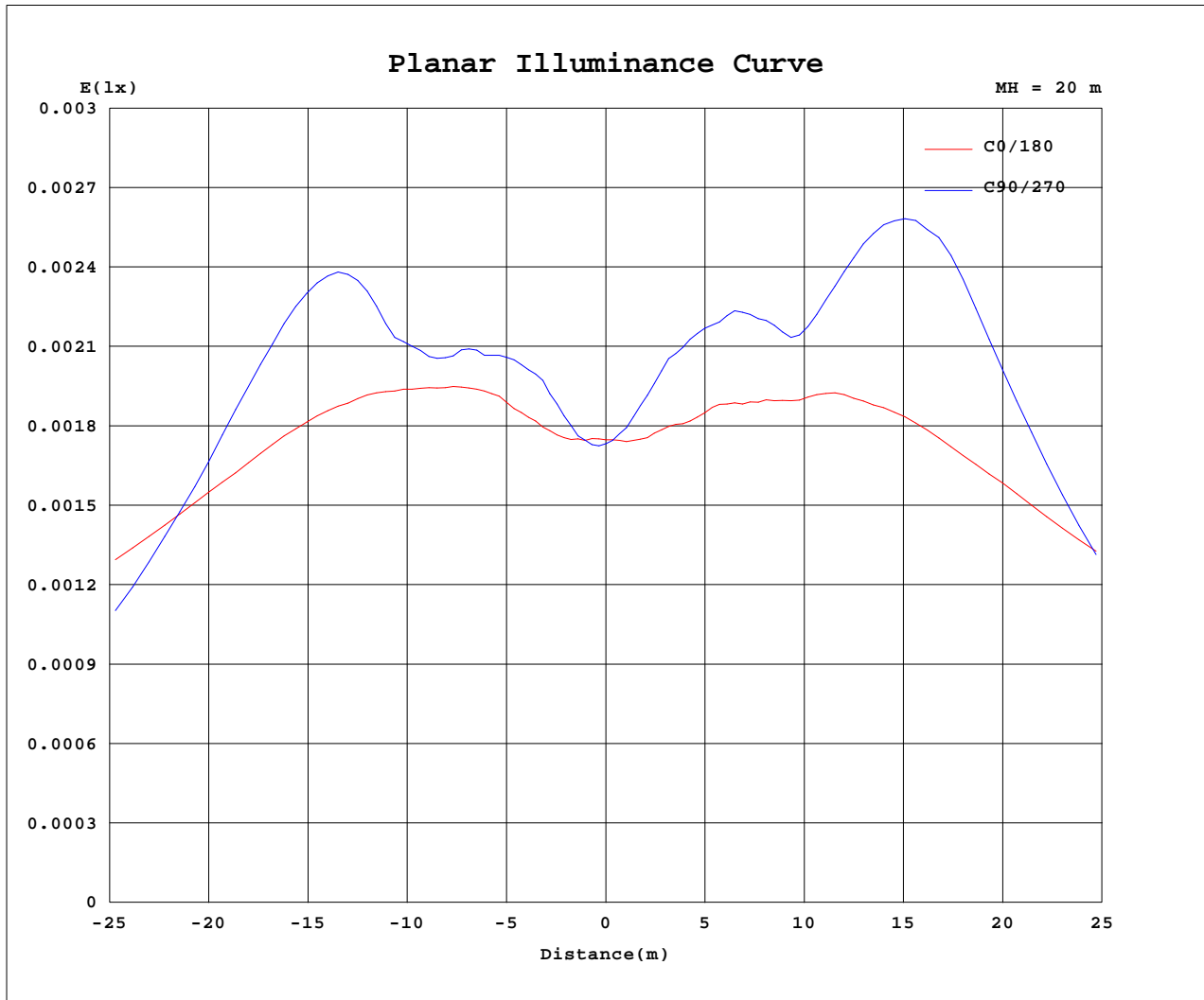
AvgL	cd/m2
L_0~180(65)av	2584
L_0~180(75)av	15545
L_0~180(85)av	78534
L_90~270(65)av	1762
L_90~270(75)av	13188
L_90~270(85)av	70864
L_45(65)av	2271
L_45(75)av	13977
L_45(85)av	74946

Standard: GB/T 29293-2012

C Range: 0 - 360DEG
C Interval: 30.0DEG
Test Speed: HIGH
Temperature:25.3℃
Operators:zoe
Test Date:2025-1-8

γ Range: 0 - 180DEG
γ Interval: 1.0DEG
Test System:EVERFINE GO-SPEX500_V1 SYSTEM V2.00.461
Humidity:65.0%
Test Distance:3.160m [K=1.0000]
Remarks: LAMP:HL-A-2835D90W-2-S1-08L-HR5 Ra:90
PC:PS-1164-006-077 120R
NOT DRIVER:48V
30minutes warm-up

Planar Illuminance Curve



C Range: 0 - 360DEG
 C Interval: 30.0DEG
 Test Speed: HIGH
 Temperature: 25.3 °C
 Operators: zoe
 Test Date: 2025-1-8

γ Range: 0 - 180DEG
 γ Interval: 1.0DEG
 Test System: EVERFINE GO-SPEX500_V1 SYSTEM V2.00.461
 Humidity: 65.0%
 Test Distance: 3.160m [K=1.0000]
 Remarks: LAMP: HL-A-2835D90W-2-S1-08L-HR5 Ra:90
 PC: PS-1164-006-077 120R
 NOT DRIVER: 48V
 30minutes warm-up



LUMINOUS DISTRIBUTION INTENSITY DATA

Test:U:47.997V I:0.1180A P:5.6637W PF:1.0000 Freq:0Hz Lamp Flux:741.58x1 lm		
NAME: OZ48-O	TYPE:	WEIGHT:
SPEC.: 3000K	DIM.:	SERIAL No.: 2501080047
MFR.: RISE	SUR.: 0.00753914m2	Shielding Angle:

Table--1

UNIT: cd

C(DEG) γ (DEG)	0	30	60	90	120	150	180	210	240	270	300	330						
0	0.69	0.69	0.69	0.69	0.69	0.69	0.69	0.69	0.69	0.69	0.69	0.69						
5	0.70	0.70	0.72	0.73	0.72	0.71	0.70	0.72	0.75	0.76	0.74	0.72						
10	0.76	0.76	0.82	0.84	0.82	0.77	0.75	0.80	0.86	0.87	0.82	0.78						
15	0.84	0.85	0.89	0.92	0.92	0.84	0.82	0.88	0.94	0.97	0.91	0.87						
20	0.93	0.94	0.97	1.01	0.96	0.95	0.91	0.96	1.05	1.07	1.00	0.96						
25	1.04	1.01	1.12	1.12	1.12	1.03	1.01	1.08	1.19	1.15	1.13	1.06						
30	1.18	1.16	1.35	1.39	1.38	1.20	1.18	1.30	1.43	1.44	1.34	1.24						
35	1.34	1.34	1.63	1.73	1.62	1.41	1.35	1.49	1.73	1.87	1.65	1.47						
40	1.53	1.53	1.83	1.88	1.82	1.60	1.55	1.72	2.05	2.24	1.97	1.72						
45	1.74	1.76	1.60	1.89	1.95	1.79	1.78	1.95	2.32	2.28	2.25	1.99						
50	2.00	2.02	1.98	1.80	2.02	2.06	2.05	2.29	2.38	2.15	2.35	2.34						
55	2.40	2.31	2.08	1.77	2.26	2.50	2.46	2.68	2.41	1.97	2.40	2.66						
60	4.12	3.77	3.42	2.97	3.96	4.41	4.11	4.07	3.09	2.42	3.15	4.09						
65	8.17	6.75	7.02	6.54	8.36	9.08	8.30	7.42	5.57	4.69	5.70	7.69						
70	16.5	15.2	15.1	14.9	18.3	18.0	16.4	14.5	11.5	10.4	11.6	15.2						
75	30.2	22.3	29.5	29.0	33.3	31.9	30.5	26.9	23.9	22.5	23.4	27.7						
80	43.0	36.9	44.5	41.7	47.0	44.5	44.5	39.9	38.5	36.1	38.4	40.6						
85	50.7	49.5	51.1	47.2	51.1	51.2	52.5	48.4	47.0	45.9	46.7	48.8						
90	0.00	0.00	0.00	0.00	0.00	0.00	0.00	0.00	0.00	0.00	0.00	0.00						
95	0.00	0.00	0.00	0.00	0.00	0.00	0.00	0.00	0.00	0.00	0.00	0.00						
100	0.00	0.00	0.00	0.00	0.00	0.00	0.00	0.00	0.00	0.00	0.00	0.00						
105	0.00	0.00	0.00	0.00	0.00	0.00	0.00	0.00	0.00	0.00	0.00	0.00						
110	0.00	0.00	0.00	0.00	0.00	0.00	0.00	0.00	0.00	0.00	0.00	0.00						
115	0.00	0.00	0.00	0.00	0.00	0.00	0.00	0.00	0.00	0.00	0.00	0.00						
120	0.00	0.00	0.00	0.00	0.00	0.00	0.00	0.00	0.00	0.00	0.00	0.00						
125	0.00	0.00	0.00	0.00	0.00	0.00	0.00	0.00	0.00	0.00	0.00	0.00						
130	0.00	0.00	0.00	0.00	0.00	0.00	0.00	0.00	0.00	0.00	0.00	0.00						
135	0.00	0.00	0.00	0.00	0.00	0.00	0.00	0.00	0.00	0.00	0.00	0.00						
140	0.00	0.00	0.00	0.00	0.00	0.00	0.00	0.00	0.00	0.00	0.00	0.00						
145	0.00	0.00	0.00	0.00	0.00	0.00	0.00	0.00	0.00	0.00	0.00	0.00						
150	0.00	0.00	0.00	0.00	0.00	0.00	0.00	0.00	0.00	0.00	0.00	0.00						
155	0.00	0.00	0.00	0.00	0.00	0.00	0.00	0.00	0.00	0.00	0.00	0.00						
160	0.00	0.00	0.00	0.00	0.00	0.00	0.00	0.00	0.00	0.00	0.00	0.00						
165	0.00	0.00	0.00	0.00	0.00	0.00	0.00	0.00	0.00	0.00	0.00	0.00						
170	0.00	0.00	0.00	0.00	0.00	0.00	0.00	0.00	0.00	0.00	0.00	0.00						
175	0.00	0.00	0.00	0.00	0.00	0.00	0.00	0.00	0.00	0.00	0.00	0.00						
180	0.00	0.00	0.00	0.00	0.00	0.00	0.00	0.00	0.00	0.00	0.00	0.00						

C Range: 0 - 360DEG
C Interval: 30.0DEG
Test Speed: HIGH
Temperature:25.3℃
Operators:zoe
Test Date:2025-1-8

γ Range: 0 - 180DEG
γ Interval: 1.0DEG
Test System:EVERFINE GO-SPEX500_V1 SYSTEM V2.00.461
Humidity:65.0%
Test Distance:3.160m [K=1.0000]
Remarks: LAMP:HL-A-2835D90W-2-S1-08L-HR5 Ra:90
PC:PS-1164-006-077 120R
NOT DRIVER:48V
30minutes warm-up